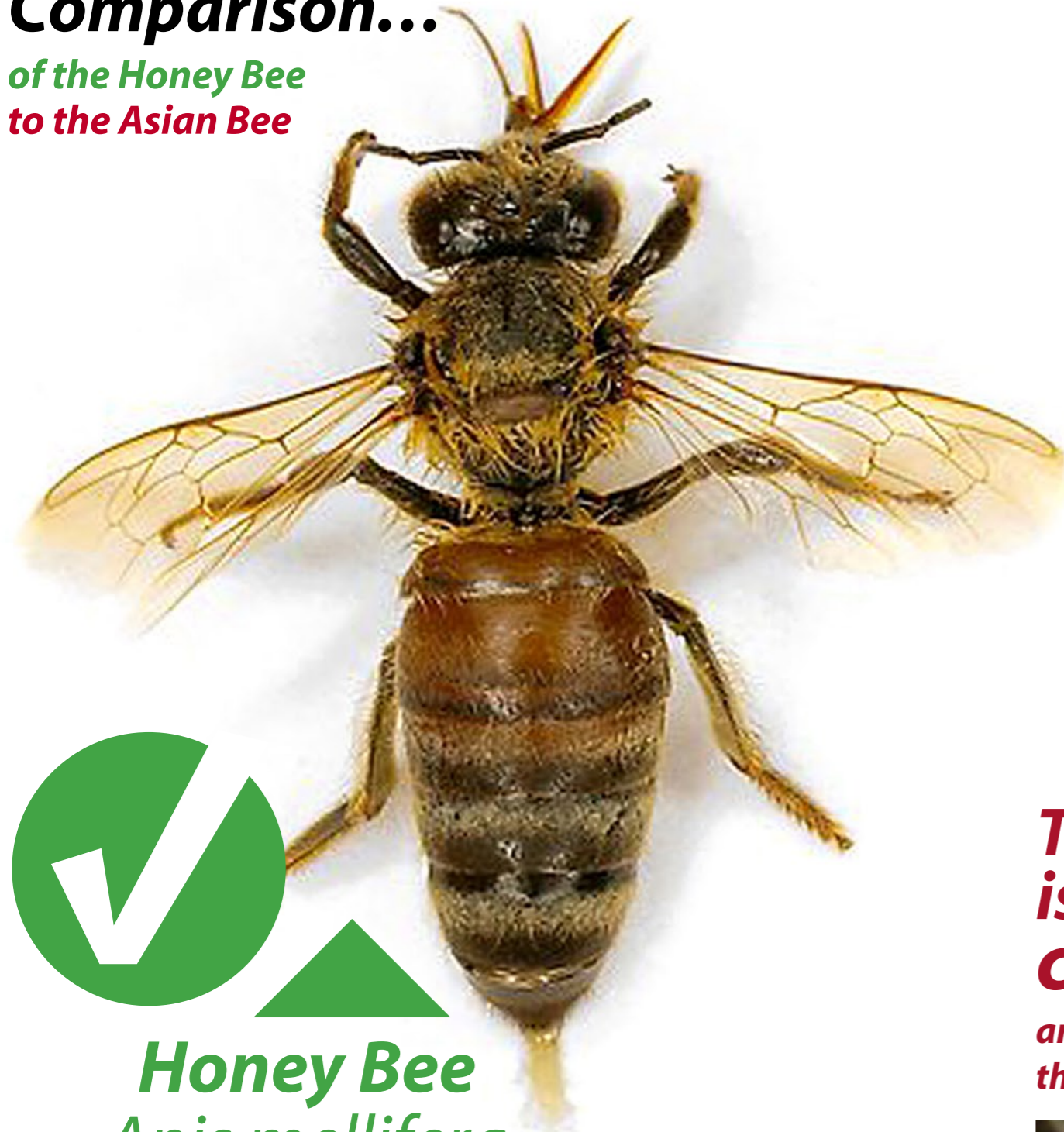


Comparison...

of the Honey Bee
to the Asian Bee



Honey Bee
Apis mellifera



Asian Bee



Asian Bee
Apis cerana
Java strain

**The Asian Bee
is the 21st century's
cane toad...**

**and it needs to be eradicated before it
threatens Australia's food supply!**

Description The Asian Bee :

- It is smaller than the European Honey Bee.
- Approximately 10 mm long.
- Flies fast and erratically.
- Is less hairy than the European honeybee.
- Has distinct yellow and black stripes on the abdomen.

Habitat and distribution of The Asian Bee :

- Is common in Asia, including Indonesia and Papua New Guinea.
- Was first detected in Australia in Cairns (Portsmith) in 2007.
- Has been found nesting in tree hollows, under the eaves of houses, in the recess under the floor of houses, in letterboxes, in a cable reel, and in various other urban locations.

The Asian Bee :

- is aggressive
- swarms prolifically
- cannot be kept in boxes
- is not an effective honey producer
- absconds at the slightest disturbance
- greatly impacts on the European Honey Bee
- is the natural host for the varroa mite *Varroa jacobsoni*.



- The Asian Bee will take over the nesting hollows of native fauna. It can occupy very small spaces.
- The Asian Bee will aggressively compete with native fauna for nectar and pollen.
- The Asian Bee has been found in a nesting box in an aviary where it took over and killed the young birds.
- Multiplying from one single hive coming into Cairns, at least 350 hives have now been discovered and destroyed...from the one hive!